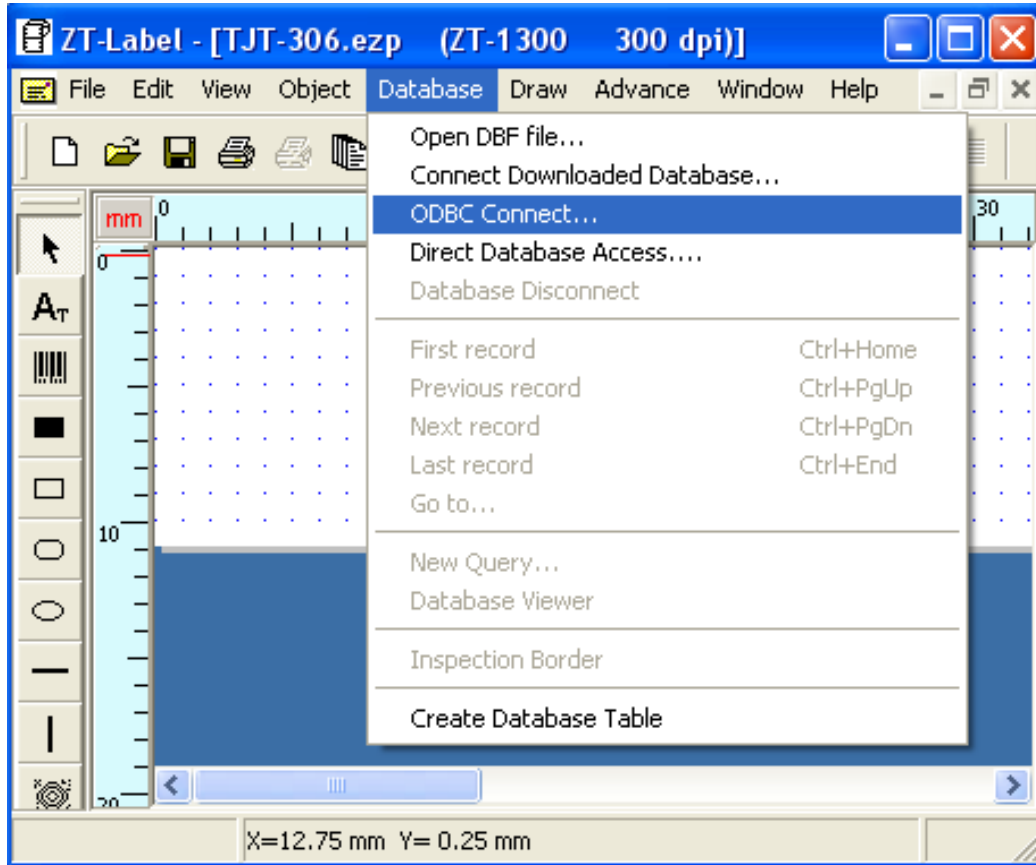
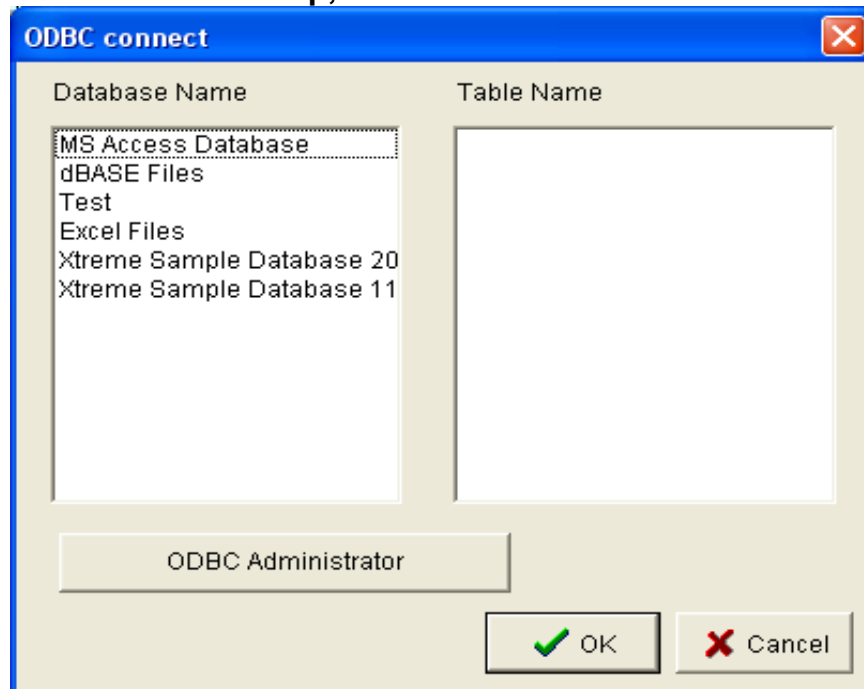


ZT Label ODBC Connect (Excel Files)

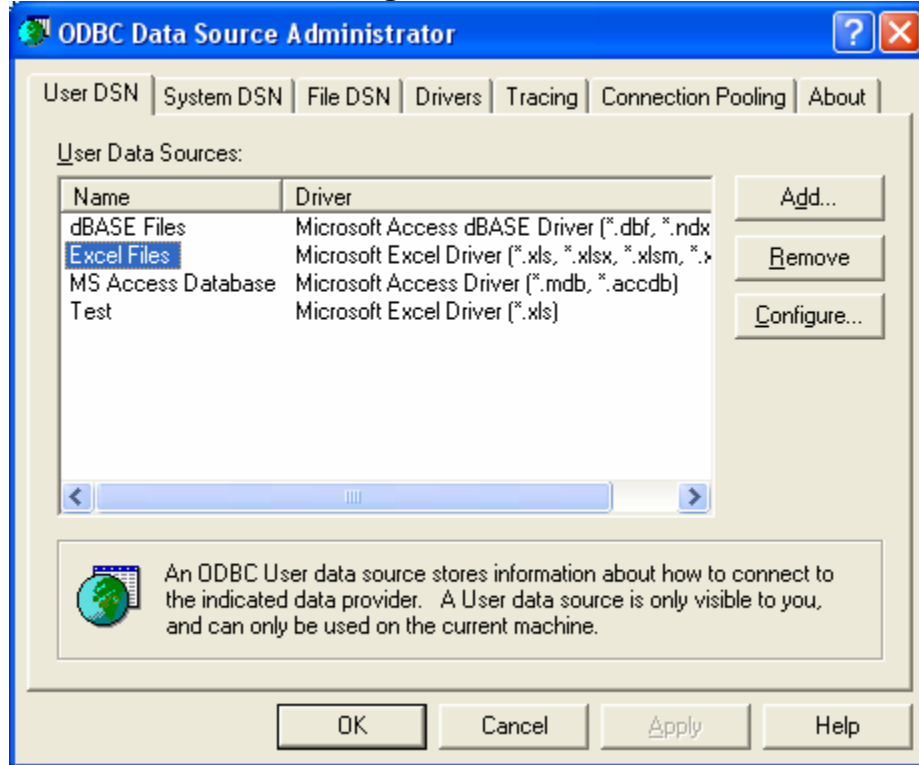
Go to the DATABASE menu and click on 'ODBC CONNECT'



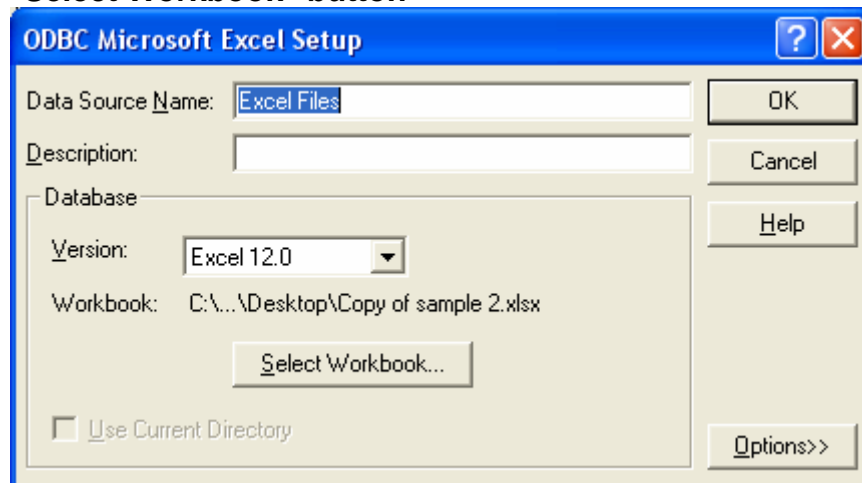
Once the screen comes up, click on the 'ODBC Administrator' button



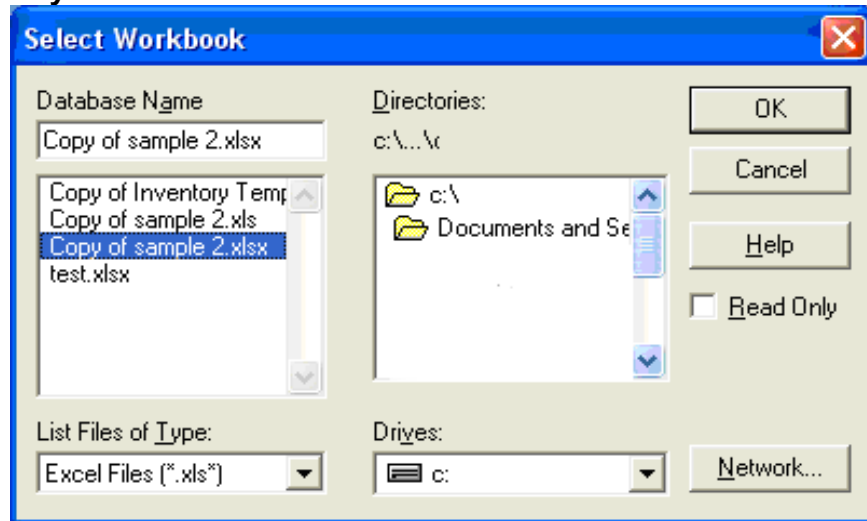
Click Excel Files and click Configure



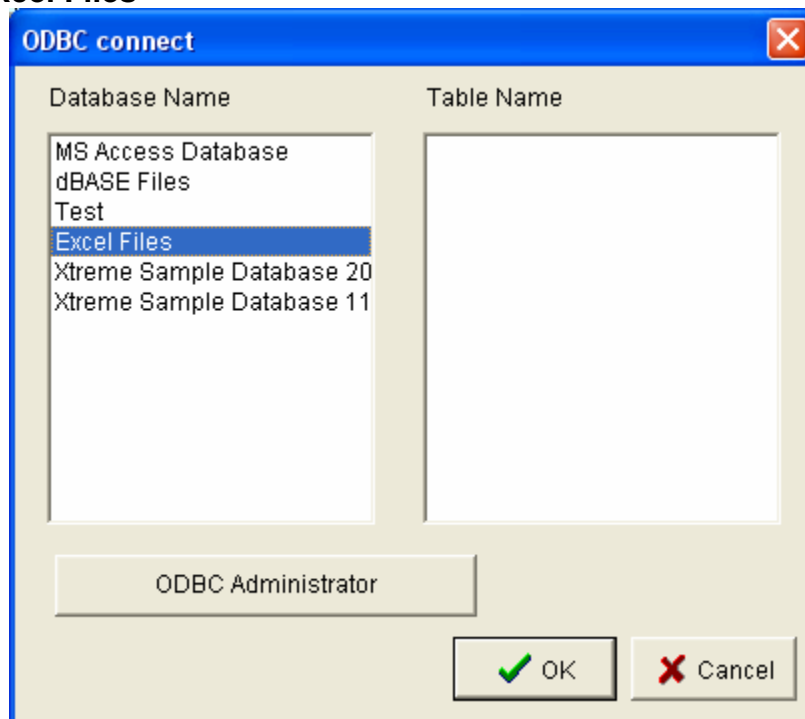
Click the "Select Workbook" button



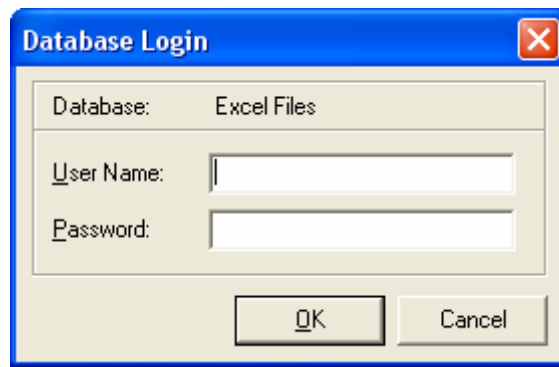
Navigate to your XLS/XLSX file and click OK



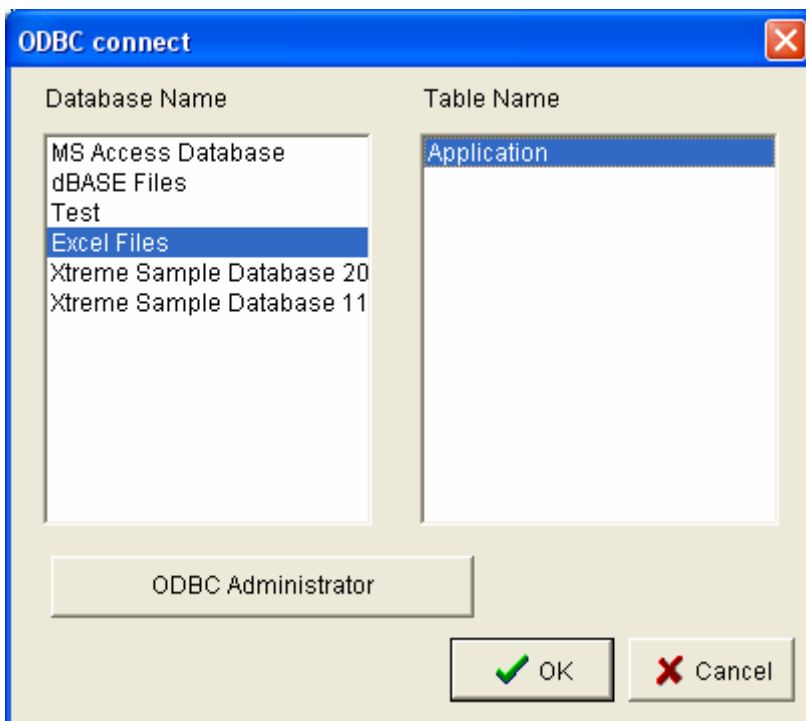
Click on Excel Files



If you get a username/password screen, just click "OK" without entering any username or password



Select the Named Range in the right column



You might get another username/password screen, just click OK

If successful, you should get confirmation of your connection

