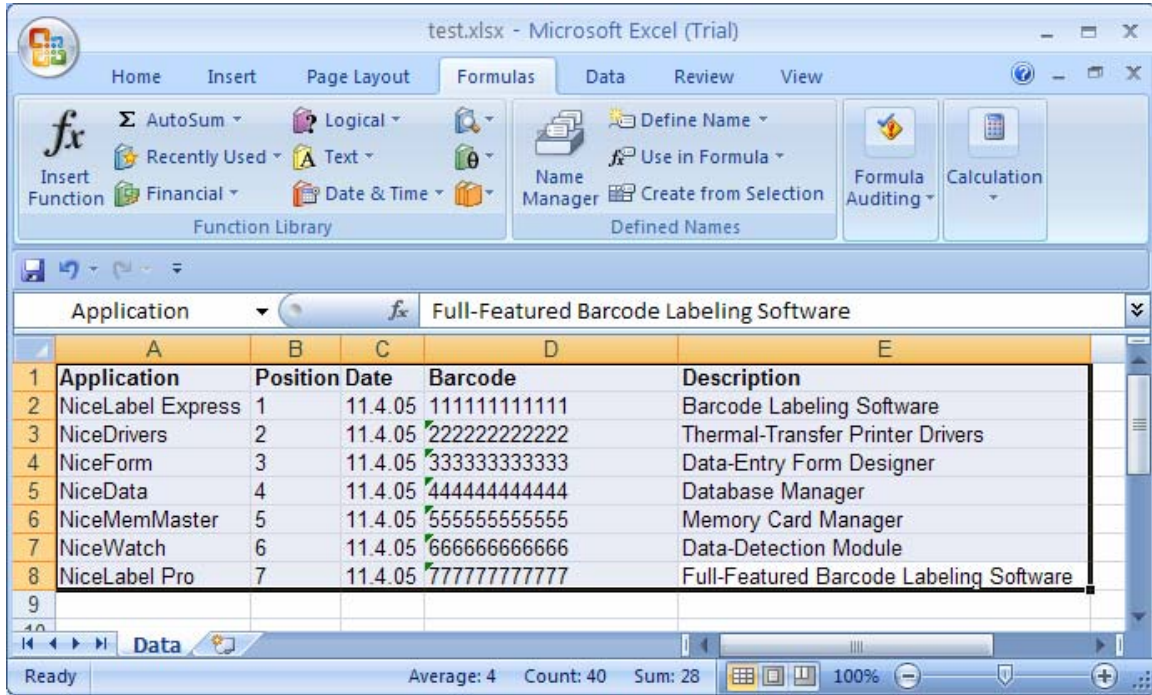


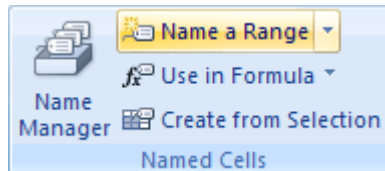
# Defining a Named Range in Excel 2007

Highlight the cells containing your data

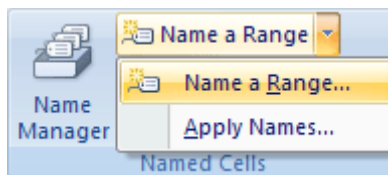


Locate the Defined Names / Name Manager panel

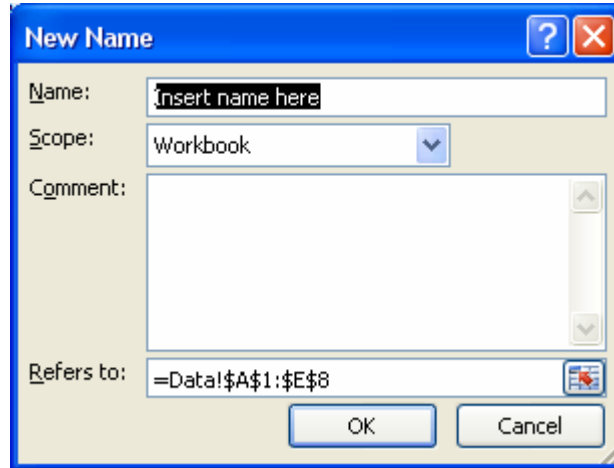
Click Name a Range



From the **Name a Range** menu, click **Name a Range**:



You'll then get the following dialogue box:



Enter a name for the range in the Name field on the New Name box.

Click OK on the New Name dialogue box.

When you click OK, you'll be returned to your spreadsheet. You won't see anything changed. But what you have done is to define a named range

You can now connect ZT Label to your worksheet as needed.